



Motion Tools Pro - Installation Guide



You can find detailed instructions on how to use the MTP on the [**Motion Tools Pro - Public Docs**](#) page.

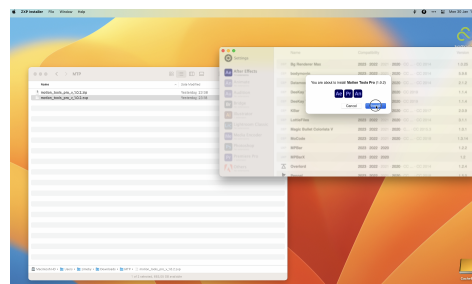


Motion Tools Pro works with the 2020(>17.5) version of After Effects and newer.

If you encounter any problems, check [**Motion Tools Troubleshooting**](#) page.

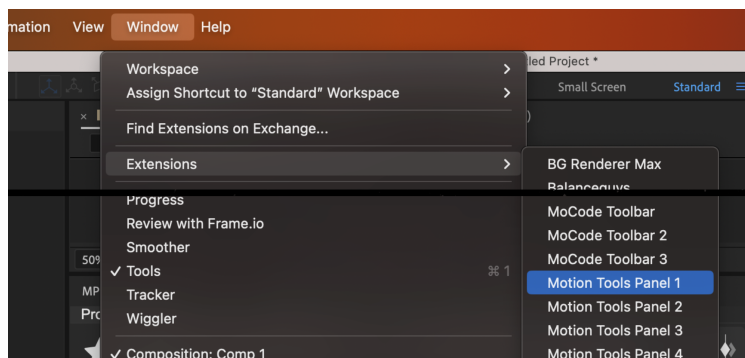
The easiest way to install the extension is by using the [**ZXP Installer**](#).

- Drag “*Motion Tools Pro v0.0.0.zxp*” file into ZXP Installer.



Installing process

- Close and re-open After Effects.
- Navigate to the top Window menu, *Extensions* → Motion Tools Panel.

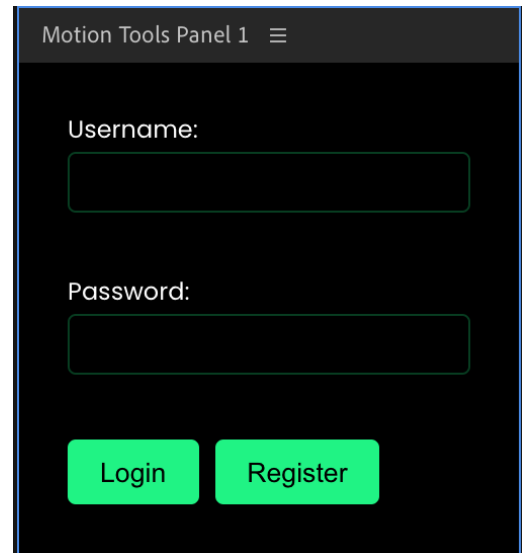


- Click to open the panel.
- When the panel opened, enter your Motion Design School account data. It is necessary to access your MTP scripts from our school and future auto-updates.

Motion Tools Pro has become our frontier scripting platform. Most of our tools will be accessible through it, so you only need one panel for all our scripts. To access it, you need to have an account in our school and be able to log into the MTP.

- Have fun!

! If you notices some problems with panels opening, like black screen, try to check this page [**Motion Tools Troubleshooting**](#)



Motion Tools Panel 1

Username:

Password:

Login Register

